



NOTICE DE MONTAGE

ESCALIER - SAUT DE LOUP

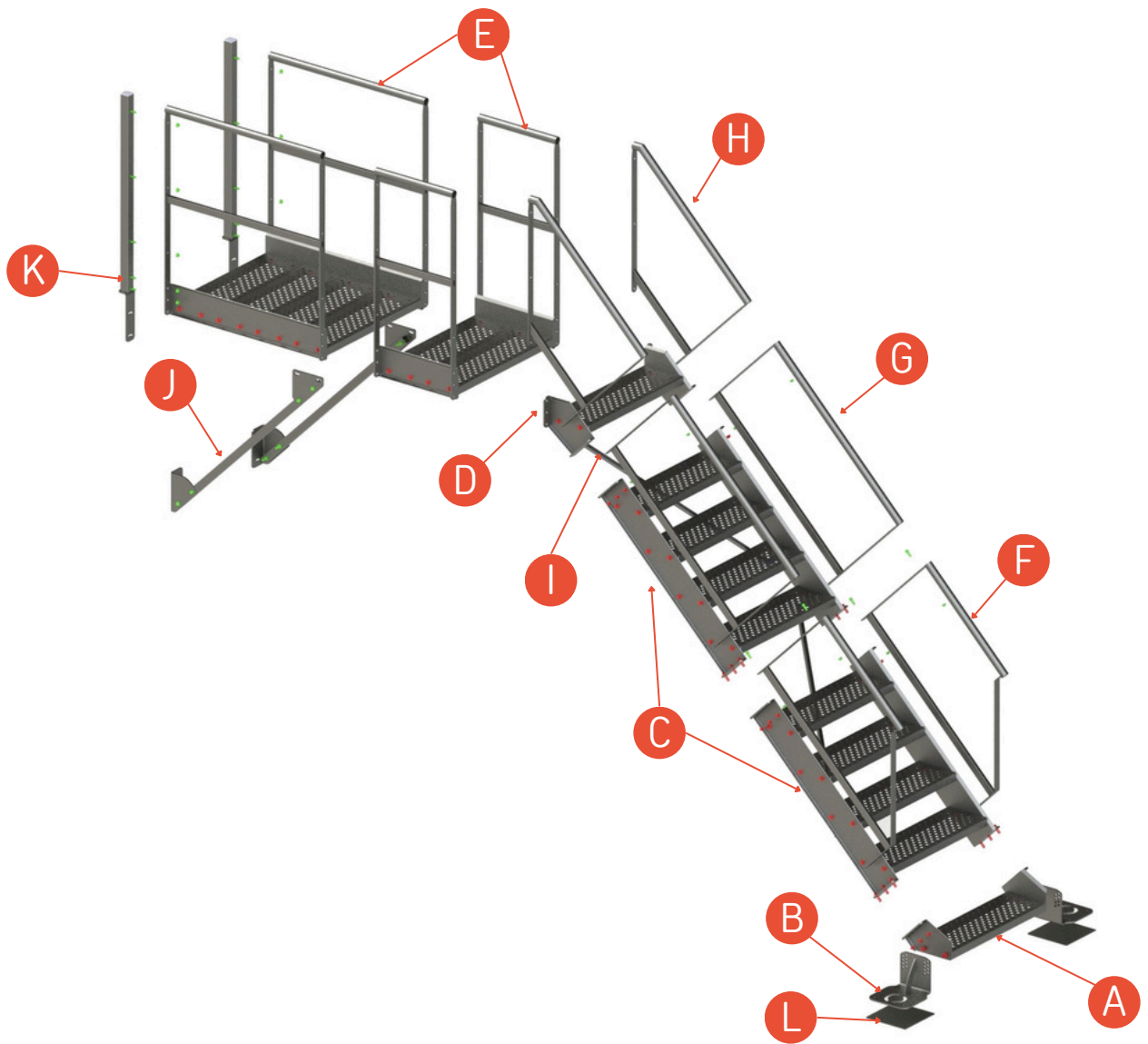
ACIER

CONFORME AUX NORMES
NF E 85-015 / NF EN 1090

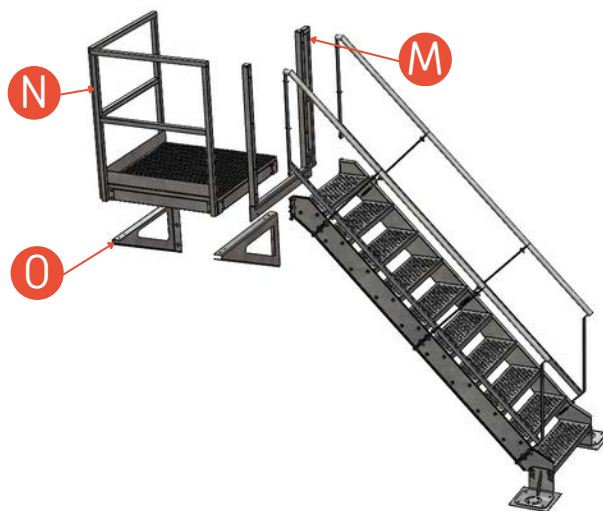
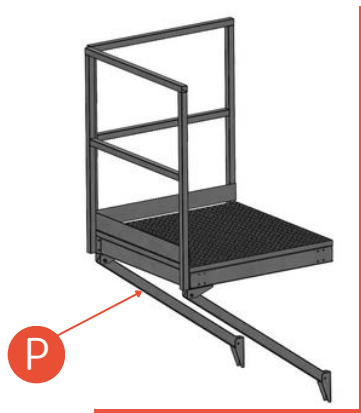


ANOXA
ALU ACIER INOX

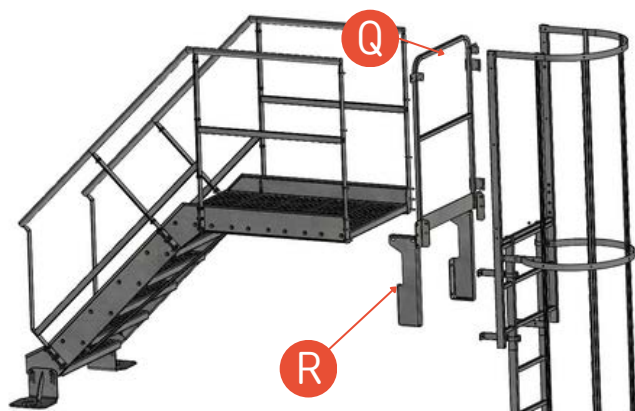
 ANOXA.FR 



Repère	Désignation	Code article	Page
A	Module de départ	SLES1MD	4
B	Platine de fixation au sol (3 Versions - selon la configuration)	SLESPIED	4
C	Modules intermédiaire (Nombre de marche selon la configuration)	SLES#MB ou SLES#MI	4
D	Module d'arrivée	SLES#MA	4
E	Modules palier (2 Longueurs possibles : 500 et 1000mm)	SLESPAL10	4
F	Garde-corps de départ	SLESPFo26	4
G	Garde-corps intermédiaire	SLESPFo34	4
H	Garde-corps d'arrivée	SLESPFo40	5
I	Raidisseur (optionnel selon configuration)	SLESRAID	5
J	Bracons (Optionnel selon la configuration - Pour escalier uniquement)	SLESBRAC	5
K	Potelets de fixation (Pour escalier uniquement)	SLESFIXP	5
L	Semelle caoutchouc (pour version à poser sur sol étanche)	AM00264	5

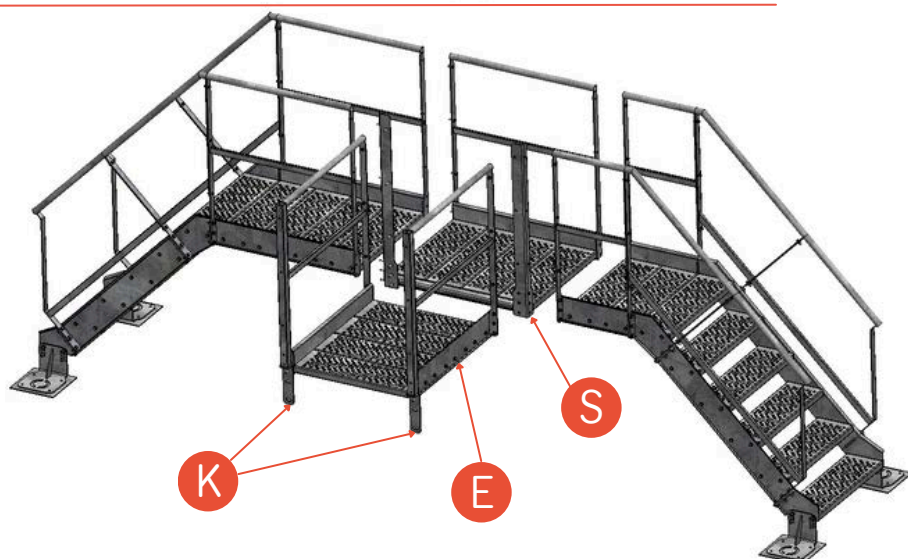


ESCALIER DROIT AVEC PALIER



ESCALIER AVEC SORTIE D'ECHELLE

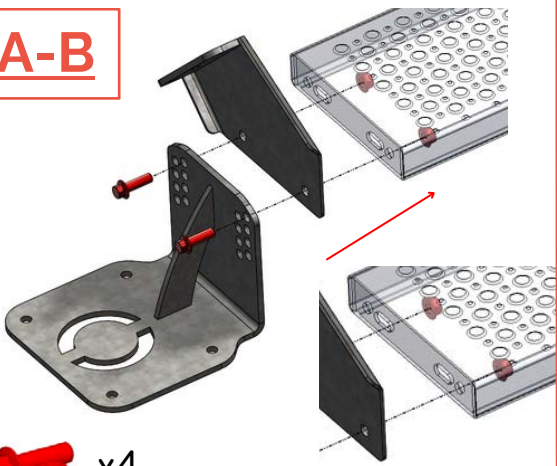
SAUT DE LOUP 3 ACCES




Repère	Désignation	Code article	Page
M	Module interface Palier modulable	SLESUPMGAUCHE SLESUPMDROITE	6
N	Module palier modulable (2 longueurs : 500mm et 1000mm)	CR02413-CR02414	6
O	Consoles de fixation palier modulable	CR02482	6
P	Jambes de force (bracons) pour palier modulable	CR12478	6
Q	Portillon pour sortie d'échelle	SLESPORTILLON	7
R	Module de sortie d'échelle sur escalier	SLESSORTECH	7
S	Module Palier d'accès latéral pour Saut de loup	SLESPALLAT	7

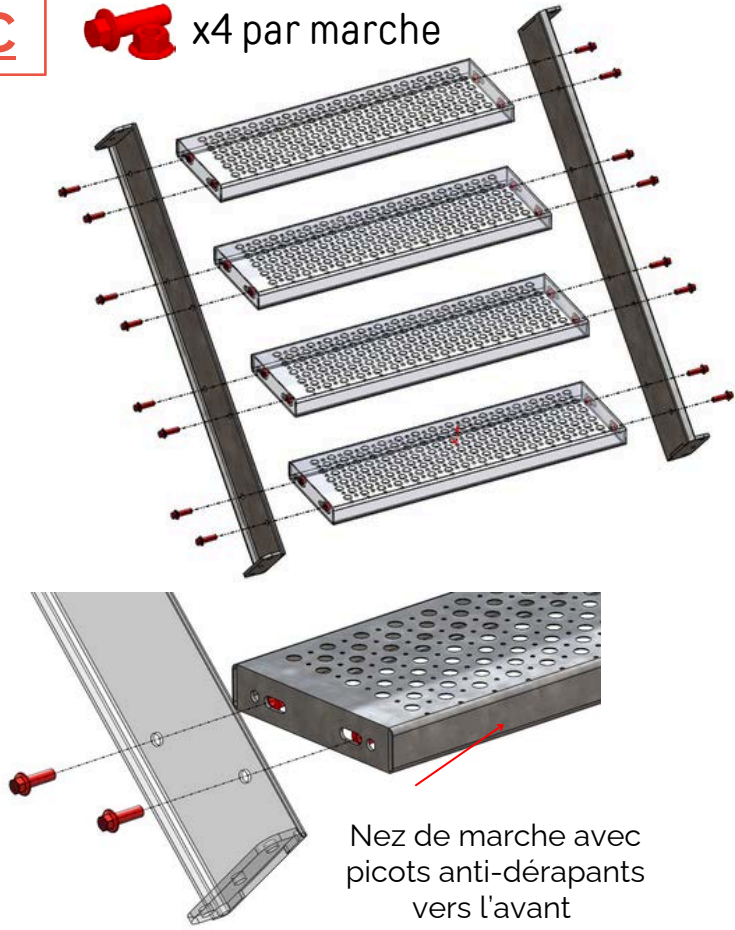
A-B

 x4



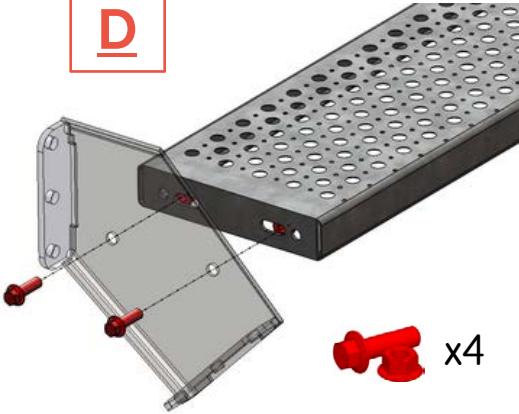
C

 x4 par marche




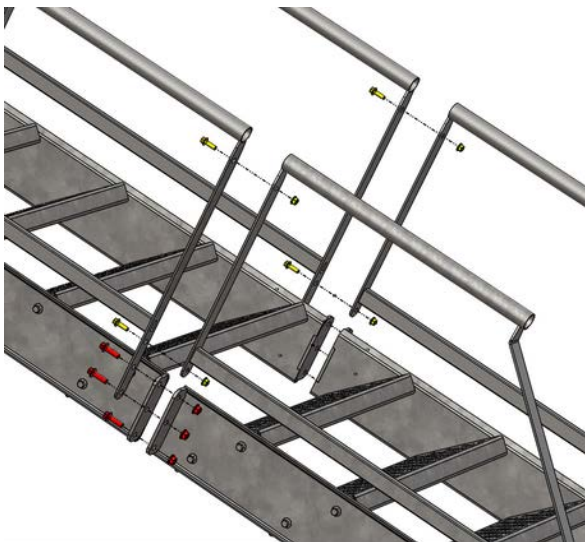
D

 x4




F-G

 x2 par garde-corps

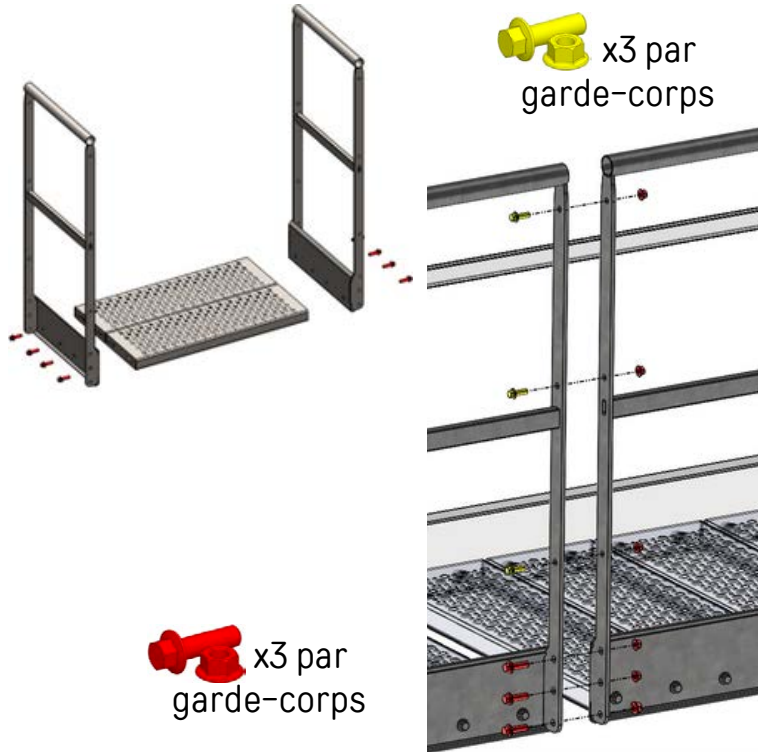



 x3 par garde-corps

E

 x4 par marche

 x3 par garde-corps



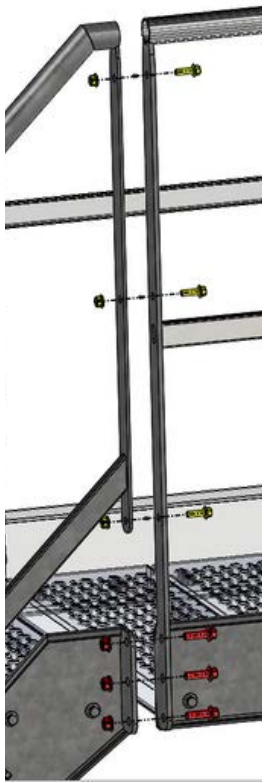
 x3 par garde-corps



Vis + Erou à embase M12x40



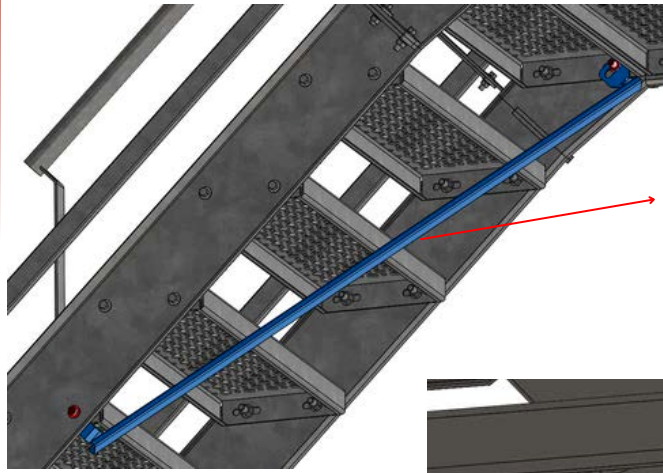
Vis + Erou à embase M10x30



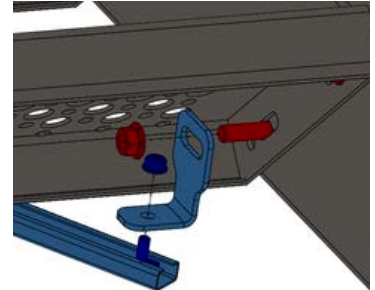
H

 x3 par garde-corps

 x3 par garde-corps

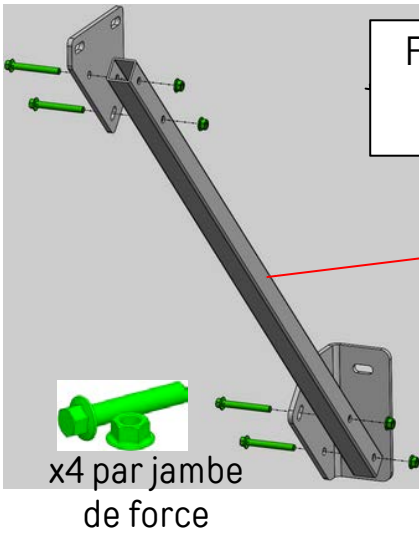


I



 x2

 x2




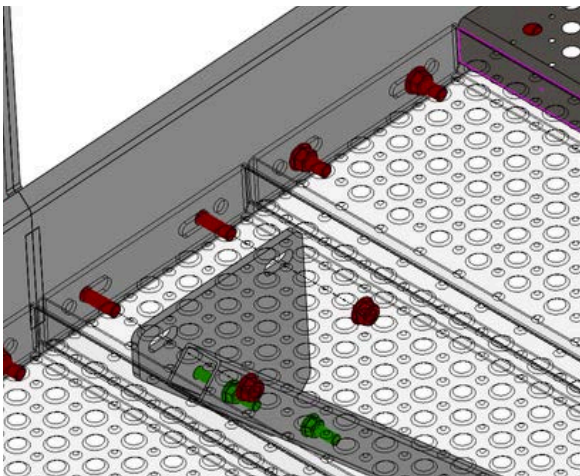
Fixation sous palier


J



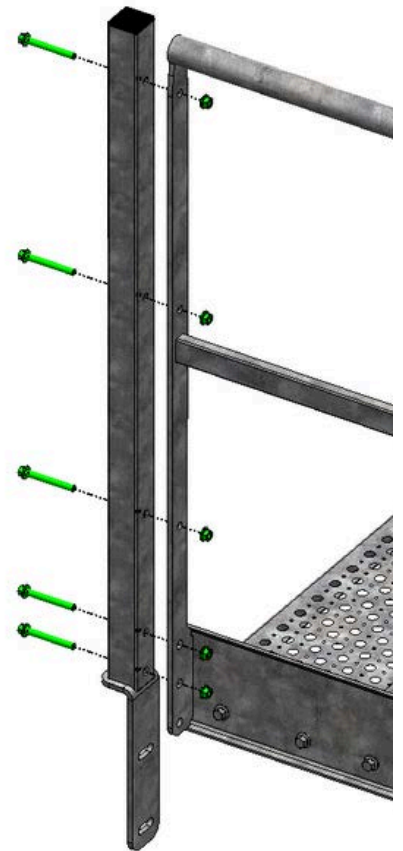
A Cheviller sur site

 x4 par jambe de force



 x5 par potelet


K



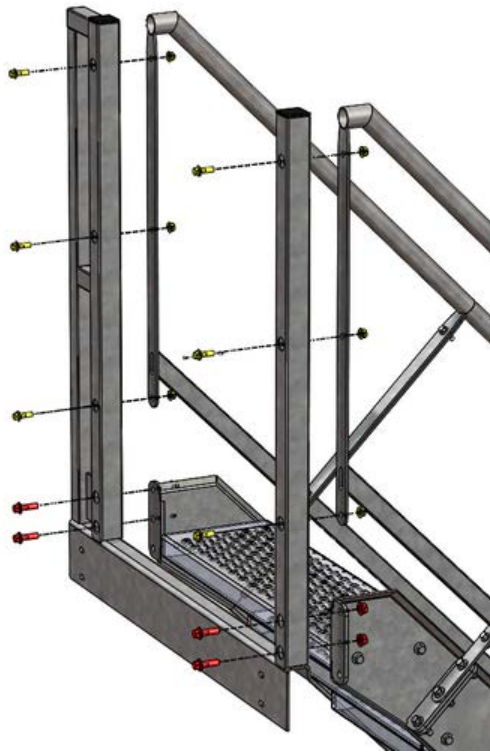
 Vis + Ecrou à embase M12x40

 Vis + Ecrou à embase M10x30

 Vis + Ecrou à embase M10x80

 Vis tête marteau + Ecrou à embase M8x25

M

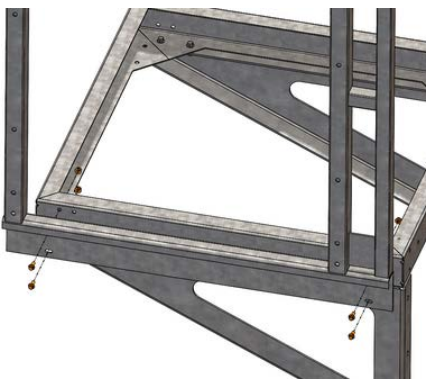


 x6




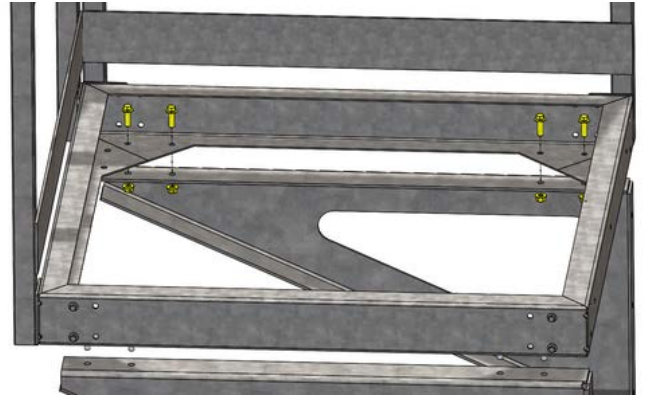
 x4

N

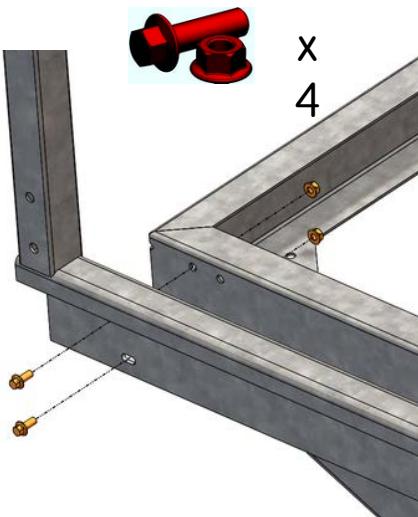


O

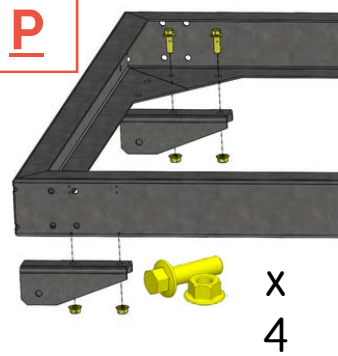
 x 8



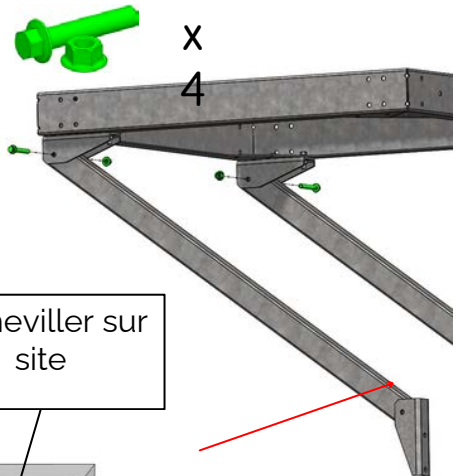
P



 x 4

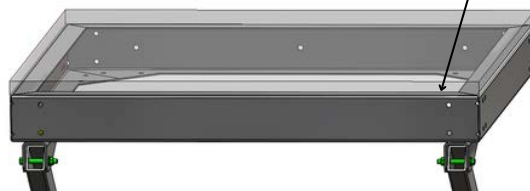


x 4



x 4

A Cheviller sur site



Vis + Ecrou à embase M12x40



Vis + Ecrou à embase M8x30

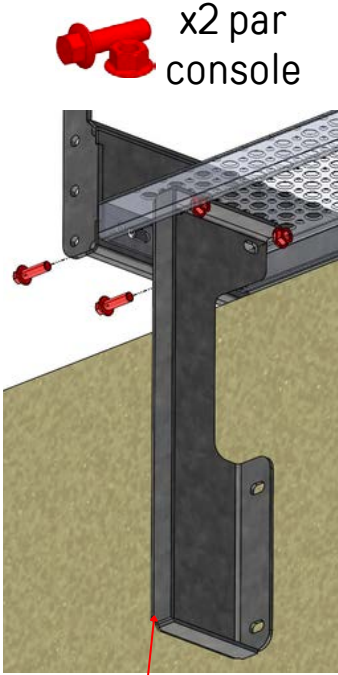


Vis + Ecrou à embase M10x30



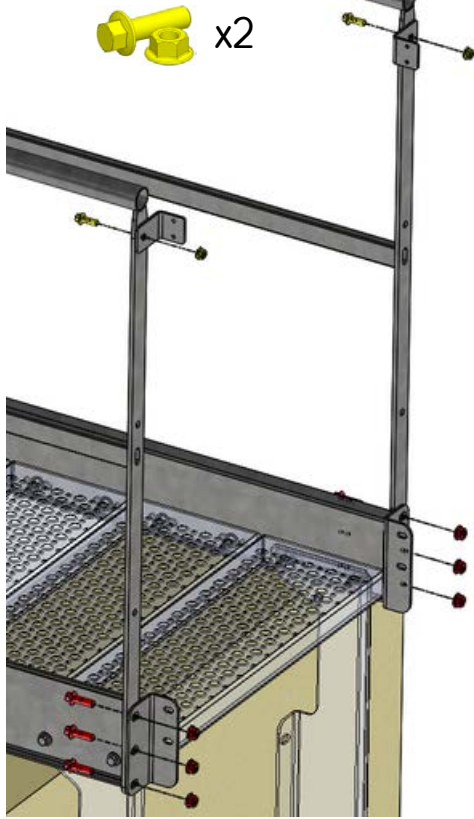
Vis TRCC + Ecrou à embase M10x70

Q-R



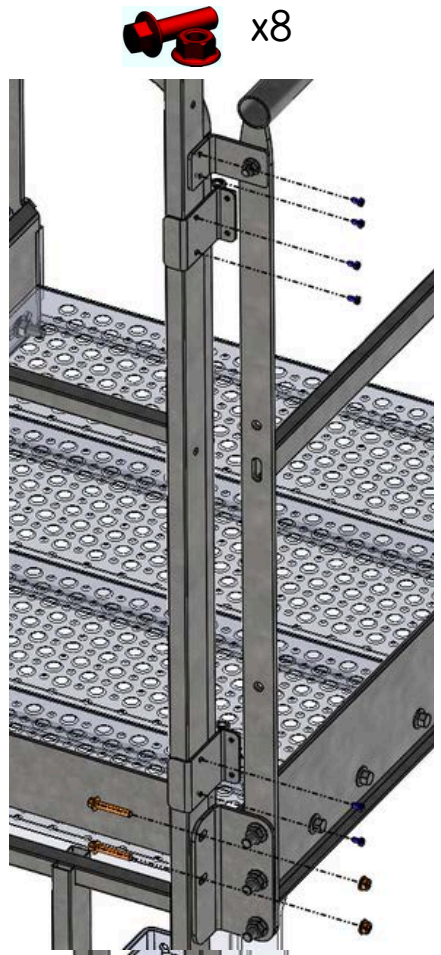
x2 par console

A cheviller sur site



x2

x6



x8

x4

S

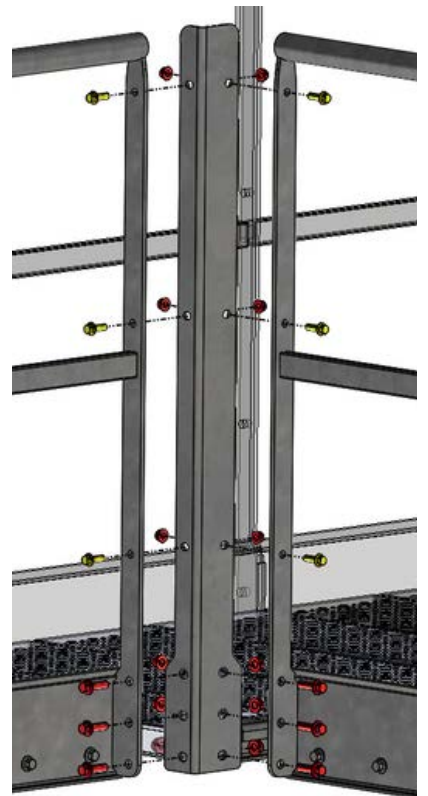


x16

x12



x12



Vis + Ecrou à embase M12x40

Vis + Ecrou à embase M10x30

Vis + Ecrou à embase M8x45

Vis auto perceuse TH 4.8x19

YESKA

GROUP

CE



ANOXA
ALU ACIER INOX

Rue de la Coulée Verte - P.A de la Fringale
27100 Val-de-reuil
(+33)2 32 09 57 80

 ANOXA.FR 